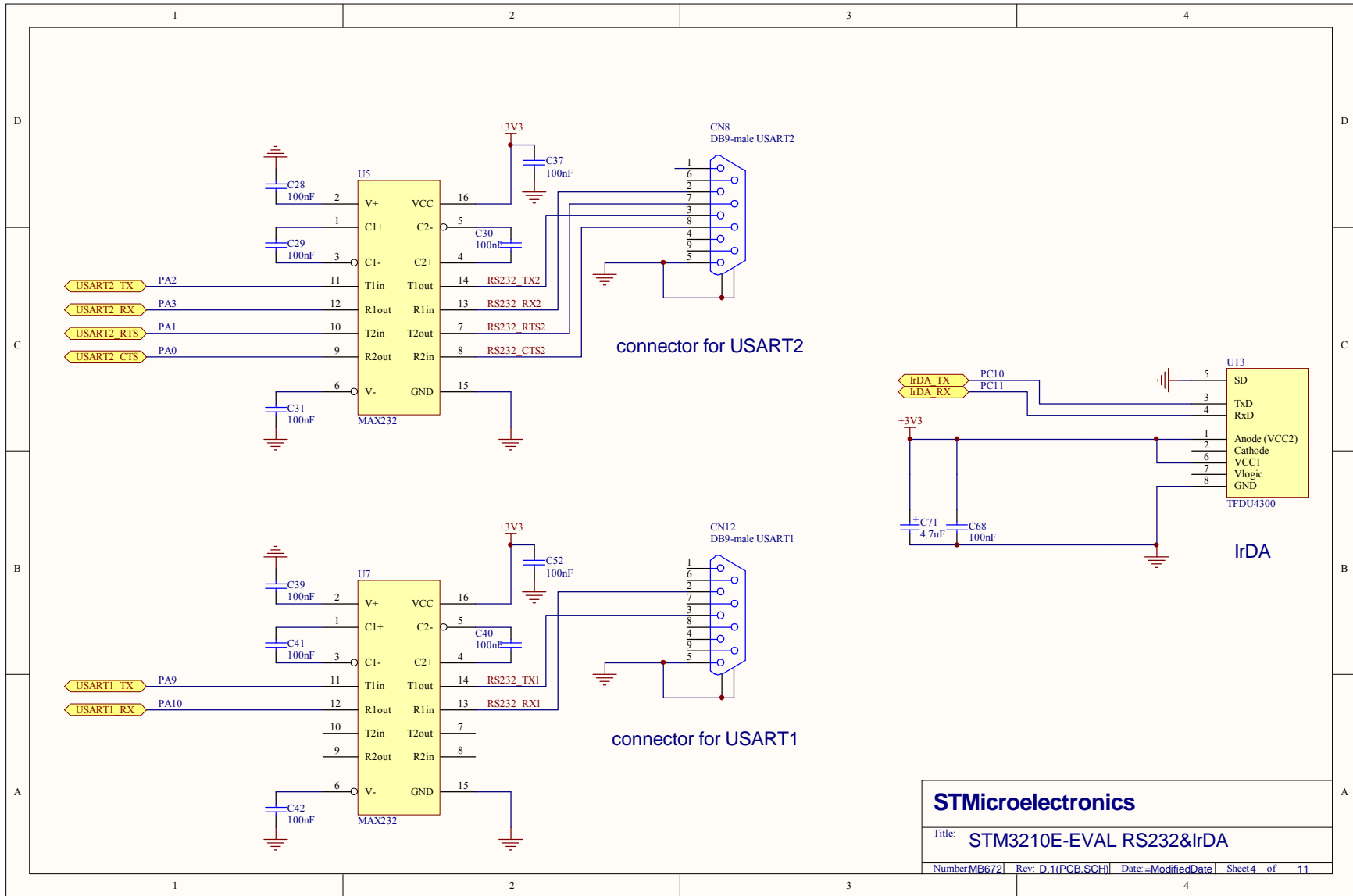


STMicroelectronics

Title: **STM3210E-EVAL SRAM&FLASH**

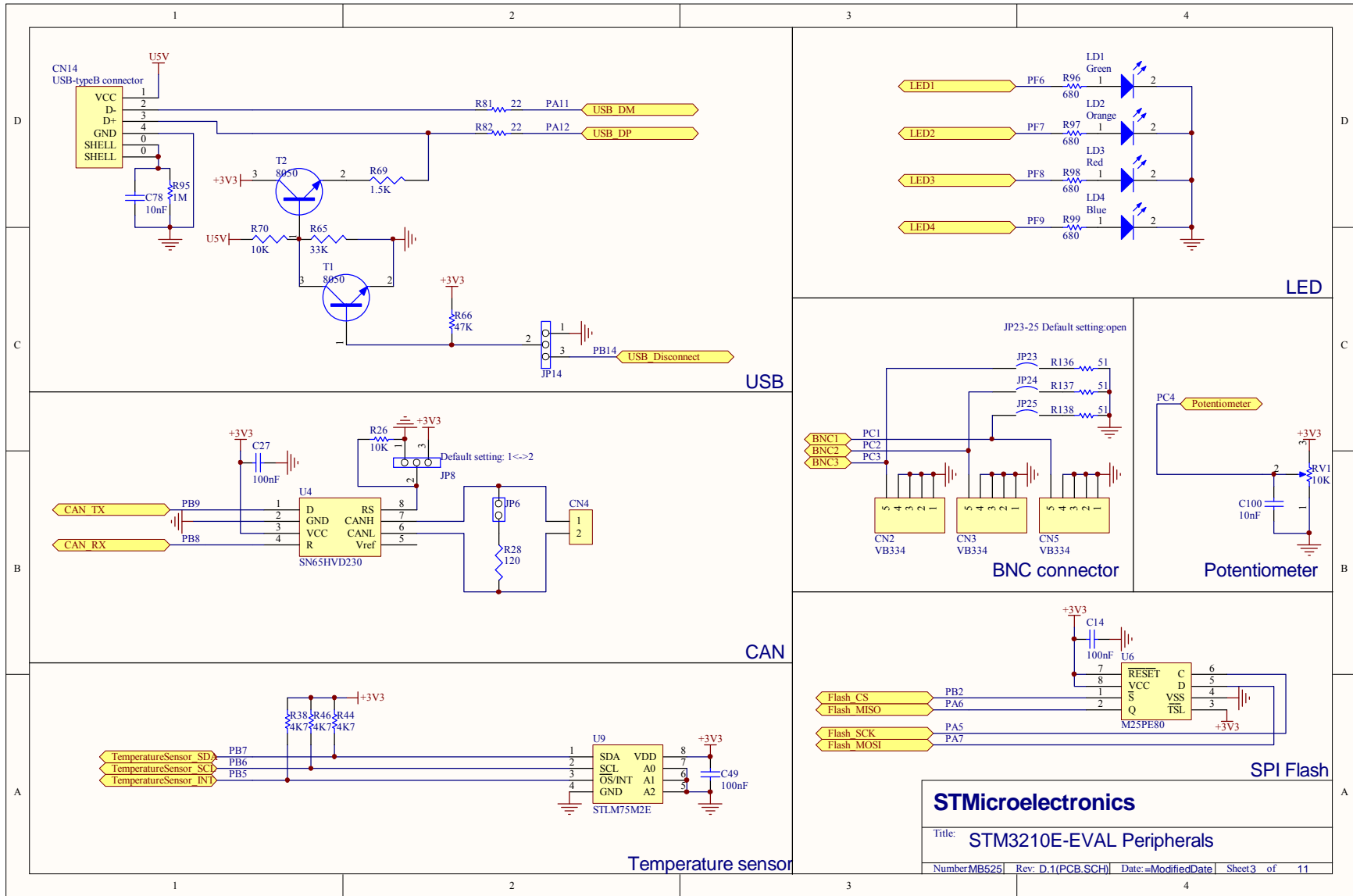
Number: MB672 | Rev: D.1(PCB.SCH) | Date: =ModifiedDate | Sheet 11 of 11



STMicroelectronics

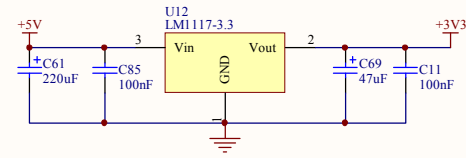
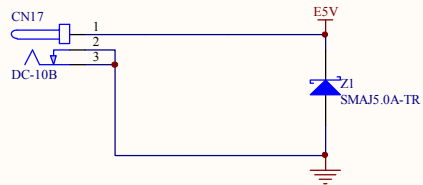
Title: STM3210E-EVAL RS232&IrDA

Number MB672 | Rev: D.1(PCB.SCH) | Date: =ModifiedDate | Sheet 4 of 11

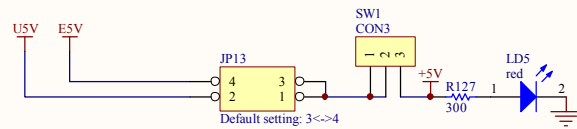


STMicroelectronics

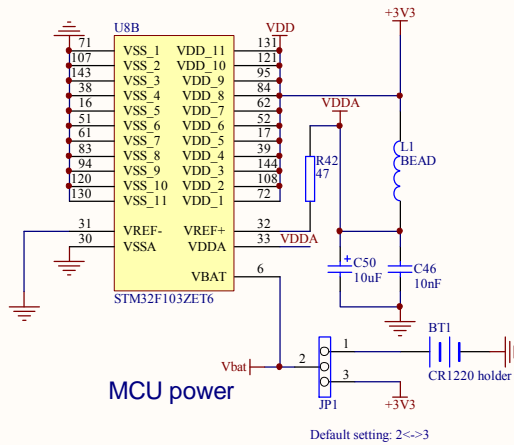
Title: **STM3210E-EVAL Peripherals**



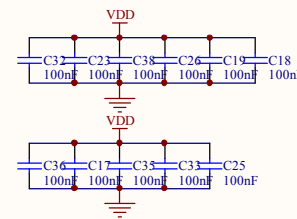
Power regulator



Jumper for choice between power connector, USB connector



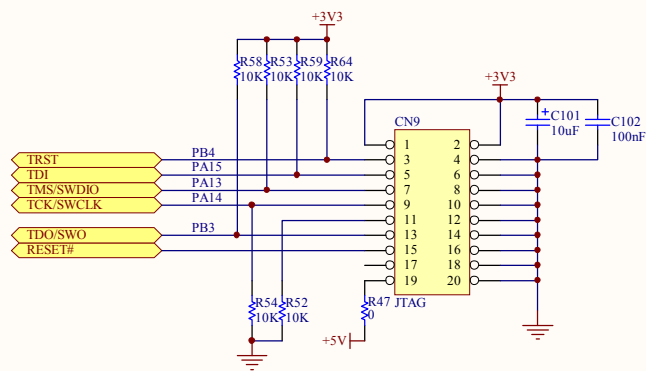
MCU power



STMicroelectronics

Title: **STM3210E-EVAL Power**

Number: MB672 | Rev: D.1(PCB.SCH) | Date: =ModifiedDate | Sheet 10 of 11

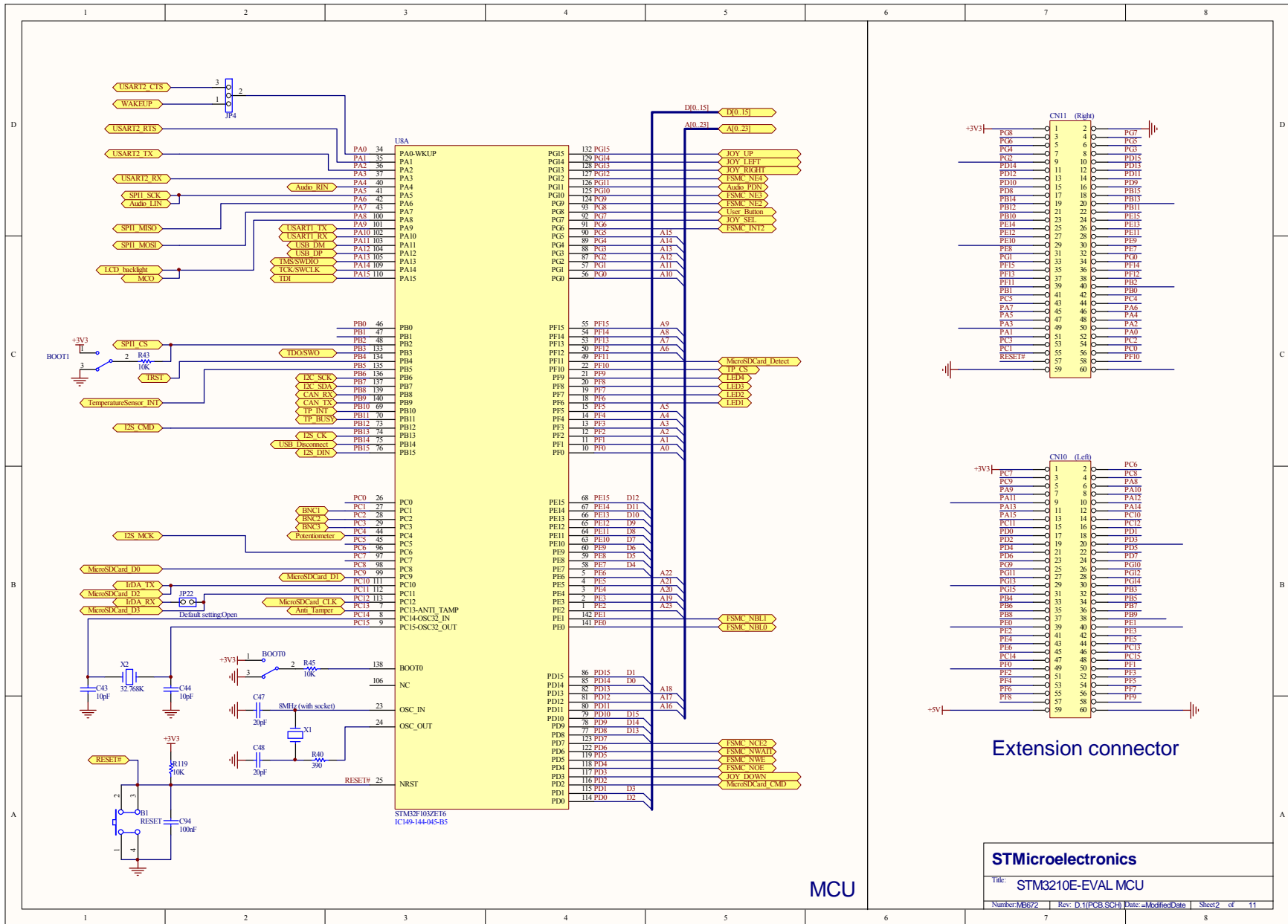


JTAG connector

STMicroelectronics

Title: STM3210E-EVAL JTAG&Trace

Number MB672 | Rev: D.1(PCB.SCH) | Date: ModifiedDate | Sheet 9 of 11

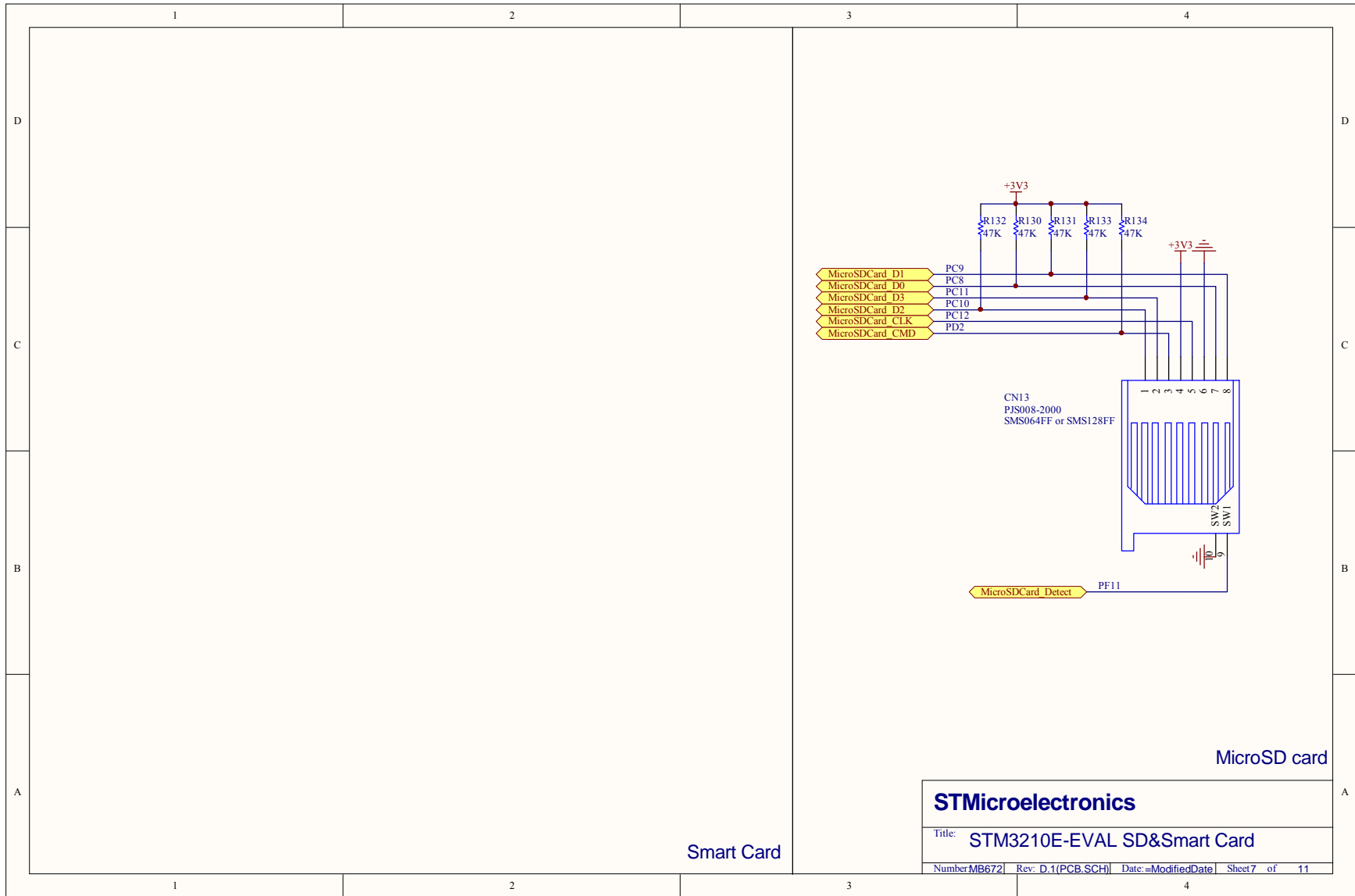


STMicroelectronics

Title: **STM3210E-EVAL MCU**

Number: MB672 Rev: D.1(PCB_SCH) Date: =ModifiedDate Sheet 2 of 11

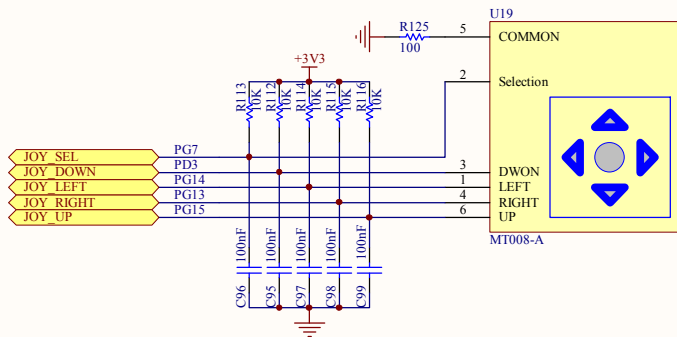
Extension connector



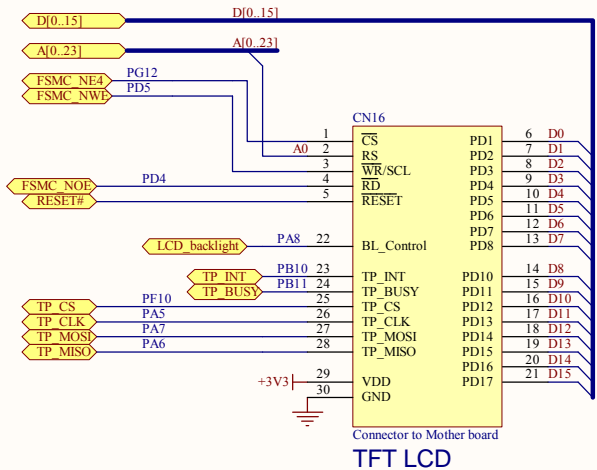
Smart Card

MicroSD card

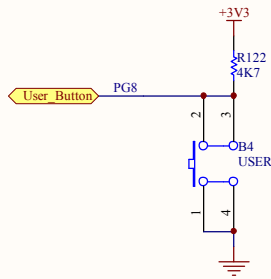
STMicroelectronics			
Title: STM3210E-EVAL SD&Smart Card			
Number: MB672	Rev: D.1(PCB.SCH)	Date: =ModifiedDate	Sheet 7 of 11



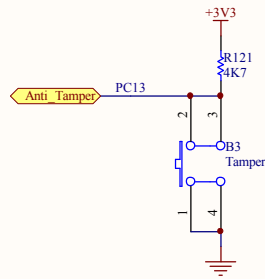
Joystick



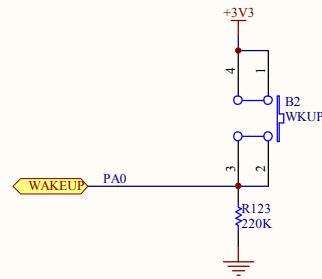
TFT LCD



User Button



Tamper Button



Wakeup Button

STMicroelectronics

Title: **STM3210E-EVAL LCD&Joystick**

Number: MB525 | Rev: D.1(PCB.SCH) | Date: =ModifiedDate | Sheet 6 of 11